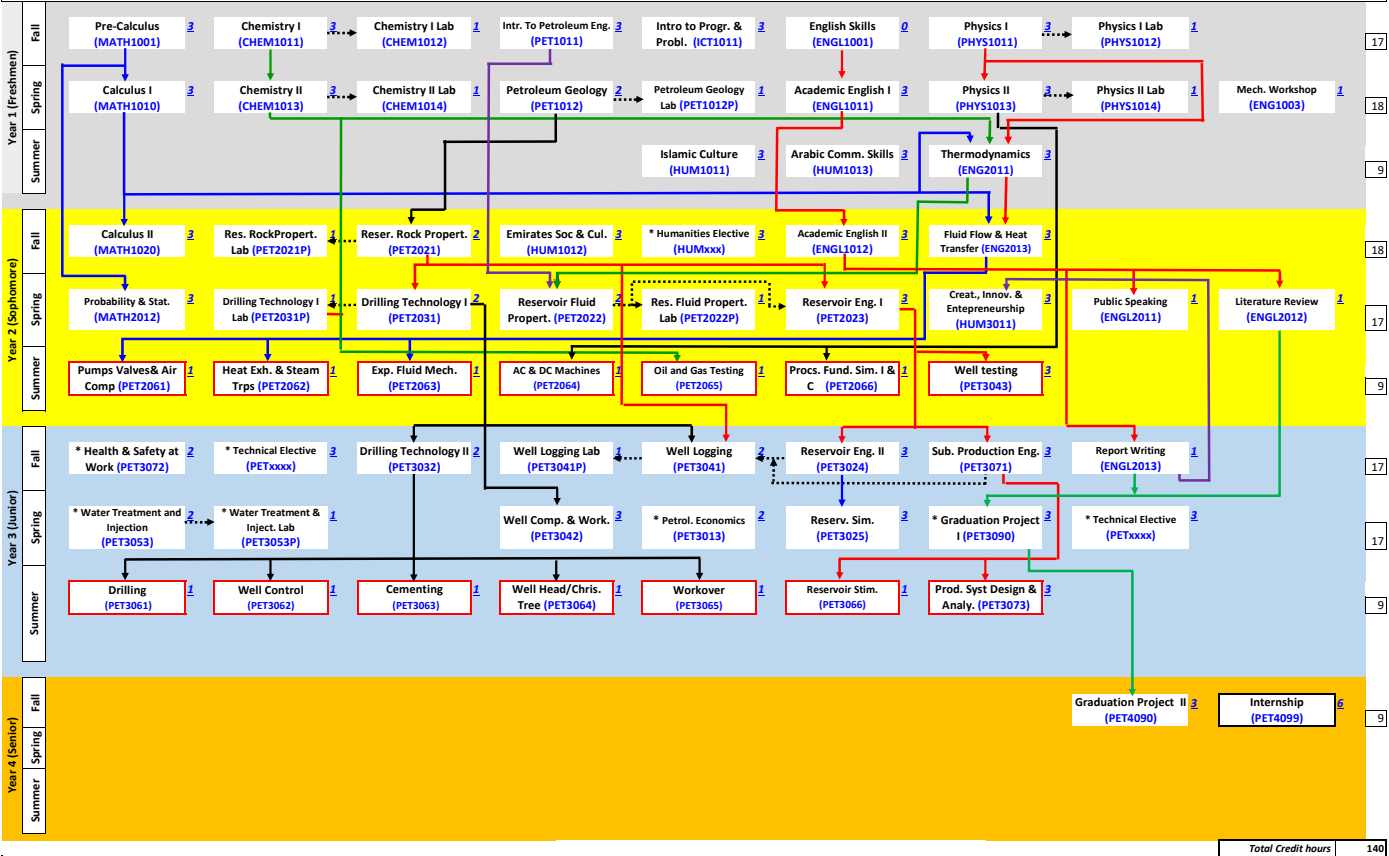


**Program Name STUDY PLAN**  
**SPECIALIZATION: Applied Bachelor in Petroleum Engineering Technology ( Applied Bachelor, AB)**  
**Total Credits Hours = 140 C.H.**



→ Pre-requisite: Means post-requisite can not be taken at the same time  
 - - - - - Co-requisite: Means course must be taken at the same time, or has already been completed  
**Graduation Projects pre-requisite:**  
 PET-3090: Completion of 90 Credit Hours + ENGL2012 + ENGL2013  
 PET-4090: Completion of PET-3090  
 Pre-requisites for PET-3013 & PET-3053: Senior standing for Applied Bachelor students  
 Pre-requisite for Calculus I (MATH-1011): placement exam > 70%, or precalculus MATH1001  
 On-the-Campus Training: Sophomore and Junior Standing

Students can select their specialization after taking PET-1011

Major (PET-xxxx) Technical Electives (6 credits)		
Code	Course Title (credit hours)	Pre-Req.
PET-3051	Numerical Methods (3 cr.)	ICT-1011 Intro to Progr. & Probl.
PET-3052	Enhanced Oil Recovery (3 cr.)	Advisor (PET999) + PET 3071 Sub. Production Eng.
PET-3054	Special Topics in Petroleum Engineering (3 cr.)	Advisor (PET999)
CHEM-4011	Envrom. Science & Analyses (3 cr.)	Advisor (PET999) & CHEM-1011 Chemistry I

Humanities (HUM-xxxx) Elective (3 credits + HUM-3011)		
Code	Course Title (credit hours)	Pre-Req.
HUM-3011	Creat., Innov. & Entrepreneurship (3 cr.) *Mandatory	ENGL-2013 Report Writing
HUM-1000	Life-Long Learning Skills (3 cr.)	No pre-requisite
HUM-2011	Psychology (3 cr.)	ENGL-1012 Academic English II
HUM-3012	Personal Development & Planning (2 cr.)	ENGL-1012 Academic English II
HUM-XXXX	Other Offered Humanities Course	Advisor (PET999)
HUM-2012	Applied Research Methods	No pre-requisite

Program Name ADVISORY PLAN

**SPECIALIZATION: Applied Bachelors Petroleum Engineering Technology (Applied Bachelor, AB)**

Total Credits Hours = 140 C.H.

Year 1																																
1st Semester					2nd Semester					Summer																						
No.	Description (Math and Sciences, Humanities, Engineering Technology ...etc.)	L	B	T	CH	CR	No.	Description (Math and Sciences, Humanities, Engineering Technology ...etc.)	L	B	T	CH	CR	No.	Description (Math and Sciences, Humanities ...etc.)	L	B	T	CH	CR												
MATH1001	Pre Calculus I	3			3	3	MATH1010	Calculus I	3			3	3	HUM1013	Arabic Communication Skills	3			3	3												
CHEM1011	Chemistry I	3			3	3	PHYS1013	Physics II	3			3	3	HUM1011	Islamic Culture	3			3	3												
CHEM1012	Chemistry I Lab		1		3	1	PHYS1014	Physics II Lab		1		3	1	ENGG2011	Thermodynamics	3			3	3												
PET1011	Intro to Petroleum Eng.	3			3	3	CHEM1013	Chemistry II	3			3	3																			
PHYS1011	Physics I	3			3	3	CHEM1014	Chemistry II Lab		1		3	1																			
PHYS1012	Physics I Lab		1		3	1	ENGL1011	Academic English I	3			3	3																			
ENGL1001	English Skills	3			0	0	PET1012	Petroleum Geology	2			2	2																			
ICT1011	Intro to Prog. & Probl. Solving	3			3	3	PET1012P	Petroleum Geology Lab				3	1																			
							ENGG1003	Mechanical Workshop	1			3	1																			
<b>Total</b>						<b>15</b>	<b>2</b>	<b>0</b>	<b>21</b>	<b>17</b>	<b>Total</b>						<b>15</b>	<b>2</b>	<b>0</b>	<b>26</b>	<b>18</b>	<b>Total</b>						<b>9</b>	<b>0</b>	<b>0</b>	<b>9</b>	<b>9</b>

Year 2																																
1st Semester					2nd Semester					Summer																						
No.	Description	L	B	T	CH	CR	No.	Description	L	B	T	CH	CR	No.	Description	L	B	T	CH	CR												
MATH1020	Calculus II	3			3	3	PET2022	Reservoir Fluid Properties	2			2	2	PET2061	Pumps Valves & Air Compressors				3	3	1											
HUM1012	Emirates Society & Culture	3			3	3	PET2022P	Reservoir Fluid Properties Lab		1		3	1	PET2062	Heat Exchangers & Steam Traps				3	3	1											
PET2021	Reservoir Rock Properties	2			2	2	PET2031	Drilling Technology I	2			2	2	PET2063	Experimental Fluid Mechanics				3	3	1											
PET2021P	Reservoir Rock Properties Lab		1		3	1	PET2031P	Drilling Technology I Lab		1		3	1	PET2064	AC & DC Machines				3	3	1											
ENGL1012	Academic English II	3			3	3	PET2023	Reservoir Engineering I	3			3	3	PET2065	Oil and Gas Testing				3	3	1											
HUMxxxx	Humanities Elective	3			3	3	HUMxxxx	Humanities Elective	3			3	3	PET2066	Process Simulation & Instru. & Control				3	3	1											
ENGG2013	Fluid Flow & Heat Transfer	3			3	3	MATH1012	Probability & Statistics	3			3	3	PET3043	Well Testing	3			3	3	3											
							ENGL2011	Public Speaking (Blended L.)	1			3	1																			
							ENGL2012	Literature Review (Blended L.)	1			3	1																			
<b>Total</b>						<b>17</b>	<b>1</b>	<b>0</b>	<b>20</b>	<b>18</b>	<b>Total</b>						<b>15</b>	<b>2</b>	<b>0</b>	<b>25</b>	<b>17</b>	<b>Total</b>						<b>3</b>	<b>0</b>	<b>18</b>	<b>21</b>	<b>9</b>

Year 3																																
1st Semester					2nd Semester					Summer																						
No.	Description	L	B	T	CH	CR	No.	Description	L	B	T	CH	CR	No.	Description	L	B	T	CH	CR												
PET3071	Subsurface Production Engineering	3			3	3	PETxxxx	Technical Elective	3			3	3	PET3061	Drilling				3	3	1											
PET3041	Well Logging	2			3	2	PET3042	Well Completion & Workover	3			3	3	PET3062	Well Control				3	3	1											
PET3041P	Well Logging Lab		1		3	1	PET3013	Petroleum Economics	2			2	2	PET3063	Ge mentoring				3	3	1											
PET3052	Drilling Technology II	2			2	2	PET3025	Reservoir Simulation	3			3	3	PET3064	Well Head / Christmas Tree				3	3	1											
PET3024	Reservoir Engineering II	3			3	3	PET3090	Graduation Project	3			3	3	PET3065	Workover				3	3	1											
PETxxxx	Technical Elective	3			3	3	PET3053	Water Treatment and Injection	2			2	2	PET3066	Reservoir Stimulation				3	3	1											
PET3072	Health & safety at Work (HSW)	2			2	2	PET3053P	Water Treatment and Injection Lab		1		3	1	PET3073	Prod. Syst Design & Analysis	3			3	3	3											
ENGL2013	Report Writing	1			3	1																										
<b>Total</b>						<b>16</b>	<b>1</b>	<b>0</b>	<b>22</b>	<b>17</b>	<b>Total</b>						<b>17</b>	<b>0</b>	<b>0</b>	<b>19</b>	<b>17</b>	<b>Total</b>						<b>3</b>	<b>0</b>	<b>18</b>	<b>21</b>	<b>9</b>

Year 4																																
1st Semester					2nd Semester					Summer																						
No.	Description	L	B	T	CH	CR	No.	Description	L	B	T	CH	CR	No.	Description	L	B	T	CH	CR												
PET4090	Graduation Project	3			3	3																										
PET4099	Internship				25	25																										
<b>Total</b>						<b>3</b>	<b>0</b>	<b>25</b>	<b>28</b>	<b>9</b>	<b>Total</b>						<b>0</b>	<b>0</b>	<b>0</b>	<b>0</b>	<b>0</b>	<b>Total</b>						<b>0</b>	<b>0</b>	<b>0</b>	<b>0</b>	<b>0</b>

- NOTES:**
- PETxxxx PET Elective to be taken from PET advanced courses after consultation with the advisor
  - HUMxxxx Humanity Elective to be selected after consultation with the advisor
  - Pre-requisite for Calculus I (MATH-101): placement exam>70%, or precalculus MATH1001
  - Students can select their specialization after taking PET-101
  - Pre-requisites for PET-3090: Completion of 90 credits